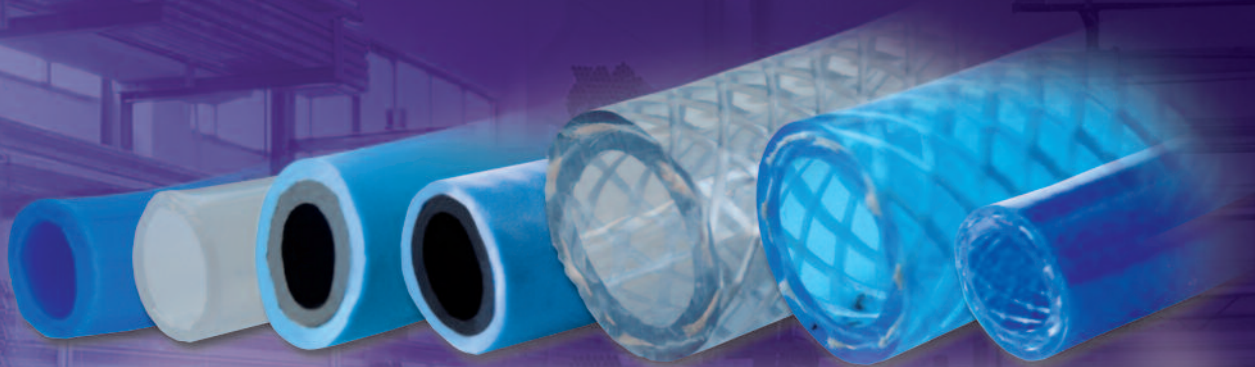
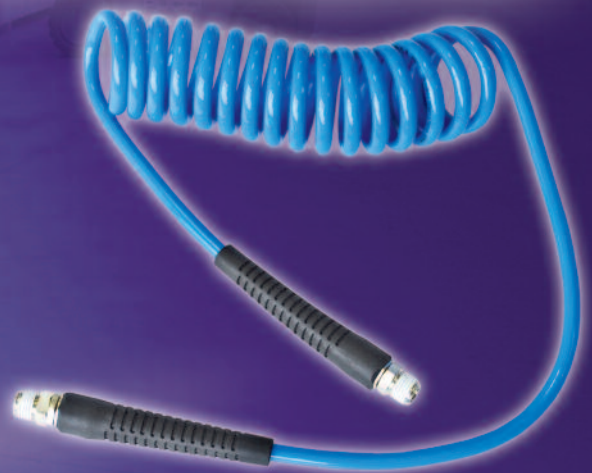
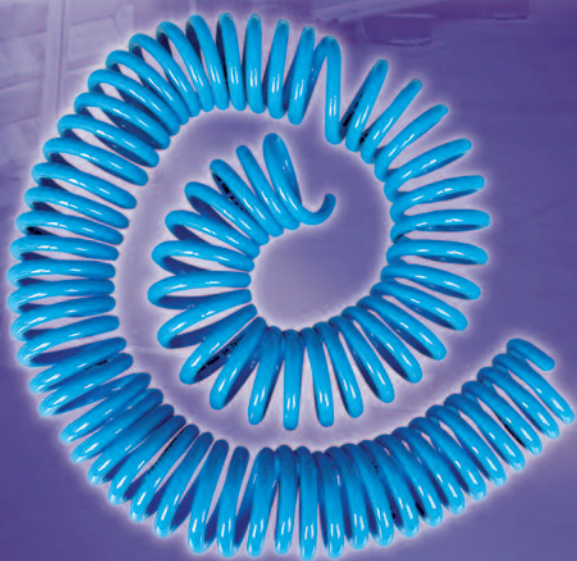


Sicomat

HOSES AND SPIRALS



SICOHOSES



INDEX

POLYURETHANE HOSES



PAG. 3 - 5

POLYAMIDE HOSES



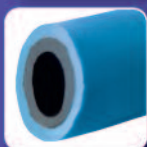
PAG. 6 - 8

SNS HOSES



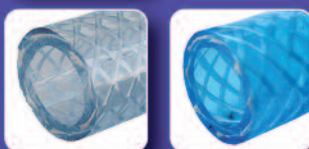
PAG. 9

NAS HOSES



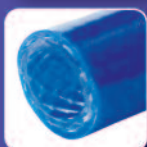
PAG. 10

TCF HOSES



PAG. 11

PUA HOSES



PAG. 12

POLYURETHANE SPIRALS



PAG. 14

POLYAMIDE SPIRALS



PAG. 15

CODE INDEX

PAG. 16

POLYURETHANE HOSES

Technical data: polyurethane hose available in different colours.

Applications: hose suitable for the delivery of compressed air to air tools and for use in the industrial automation sector.

Operating temperature: -40°C / +60°C

Supply: 25 m boxed coils / 100 m drums.

TUBI IN POLIURETANO

Caratteristiche tecniche: tubo in poliuretano disponibile in diversi colori.

Applicazioni: tubo adatto al trasporto di aria compressa nel campo dell'alimentazione degli utensili e dell'automazione.

Temperatura di utilizzo: -40°C / +60°C

Fornitura: rotoli da 25 m in scatola / bobine da 100 m su rocchetto.

TUBOS DE POLIURETANO

Características técnicas: tubo de poliuretano disponible en varios colores.

Aplicaciones: tubo idóneo para transportar aire comprimido en el sector de la alimentación de herramientas y de la automatización.

Temperatura de uso: -40°C / +60°C

Suministro: rollos de 25 m en caja / bobinas de 100 m en carrete.

TUYAUX EN POLYURÉTHANE

Caractéristiques techniques: tuyau en polyuréthane disponible en plusieurs couleurs.

Applications: tuyau pour le transport d'air comprimé dans le secteur de l'alimentation des outils et de l'automatisation.

Température d'utilisation: -40°C / +60°C

Fourniture: rouleaux de 25 m en boîte / touret de 100 m.

SCHLÄUCHE AUS POLYURETHAN

Technische Eigenschaften: Schlauch aus Polyurethan, in verschiedenen Farben erhältlich.

Anwendungsbereiche: Druckluftverteilung in dem Sektor von der Versorgung der Druckluftwerkzeuge und der Automationstechnik.

Temperaturbereich: -40°C / +60°C

Lieferung: 25 m Rollen in der Schachtel / 100 m Rollen.



BLUE POLYURETHANE HOSE

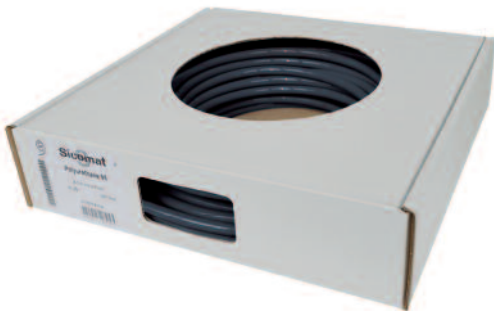
TUBO POLIURETANO COLORE BLU
TUBO POLIURETANO COLOR AZUL
TUYAU POLYURÉTHANE COULEUR BLEU
POLYURETHAN-SCHLAUCH BLAU



Code	Ø e	Ø i	Bending radius	Pressures at 20°C		Icon	(g)
				Burst	Working		
PU002.004.025B	4	2	20 mm	67	22	25 m	12
PU002.004.100B	4	2	20 mm	67	22	100 m	12
PU004.006.025B	6	4	30 mm	40	13	25 m	19
PU004.006.100B	6	4	30 mm	40	13	100 m	19
PU055.008.025B	8	5,50	45 mm	37	12	25 m	33
PU055.008.100B	8	5,50	45 mm	37	12	100 m	33
PU007.010.025B	10	7	35 mm	35	12	25 m	50
PU007.010.100B	10	7	35 mm	35	12	100 m	50
PU008.012.025B	12	8	30 mm	40	13	25 m	78
PU008.012.100B	12	8	30 mm	40	13	100 m	78
PU095.014.025B	14	9,5	50 mm	40	13	25 m	95

BLACK POLYURETHANE HOSE

TUBO POLIURETANO COLORE NERO
TUBO POLIURETANO COLOR NEGRO
TUYAU POLYURÉTHANE COULEUR NOIR
POLYURETHAN-SCHLAUCH SCHWARZ



Code	Ø e	Ø i	Bending radius	Pressures at 20°C		Icon	(g)
				Burst	Working		
PU002.004.025N	4	2	20 mm	67	22	25 m	12
PU002.004.100N	4	2	20 mm	67	22	100 m	12
PU004.006.025N	6	4	30 mm	40	13	25 m	19
PU004.006.100N	6	4	30 mm	40	13	100 m	19
PU055.008.025N	8	5,50	45 mm	37	12	25 m	33
PU055.008.100N	8	5,50	45 mm	37	12	100 m	33
PU007.010.025N	10	7	35 mm	35	12	25 m	50
PU007.010.100N	10	7	35 mm	35	12	100 m	50
PU008.012.025N	12	8	30 mm	40	13	25 m	78
PU008.012.100N	12	8	30 mm	40	13	100 m	78

GREEN POLYURETHANE HOSE

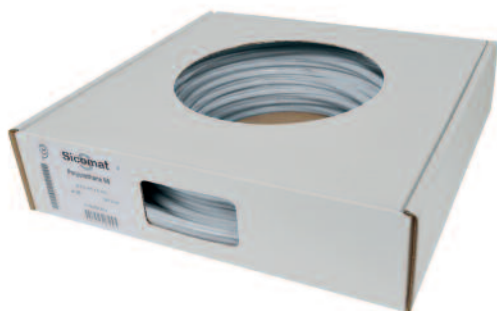
TUBO POLIURETANO COLORE VERDE
TUBO POLIURETANO COLOR VERDE
TUYAU POLYURÉTHANE COULEUR VERT
POLYURETHAN-SCHLAUCH GRÜN




Code	Ø e	Ø i	Bending radius	Pressures at 20°C		Icon	(g)
				Burst	Working		
PU002.004.025V	4	2	20 mm	67	22	25 m	12
PU002.004.100V	4	2	20 mm	67	22	100 m	12
PU004.006.025V	6	4	30 mm	40	13	25 m	19
PU004.006.100V	6	4	30 mm	40	13	100 m	19
PU055.008.025V	8	5,50	45 mm	37	12	25 m	33
PU055.008.100V	8	5,50	45 mm	37	12	100 m	33
PU007.010.025V	10	7	35 mm	35	12	25 m	50
PU007.010.100V	10	7	35 mm	35	12	100 m	50
PU008.012.025V	12	8	30 mm	40	13	25 m	78
PU008.012.100V	12	8	30 mm	40	13	100 m	78

TRANSPARENT POLYURETHANE HOSE

TUBO POLIURETANO COLORE TRASPARENTE
TUBO POLIURETANO COLOR TRANSPARENTE
TUYAU POLYURÉTHANE COULEUR TRANSPARENTE
POLYURETHAN-SCHLAUCH TRANSPARENT




Code	Ø e	Ø i	Bending radius	Pressures at 20°C			(g)
				Burst	Working		
PU002.004.025T	4	2	20 mm	67	22	25 m	12
PU002.004.100T	4	2	20 mm	67	22	100 m	12
PU004.006.025T	6	4	30 mm	40	13	25 m	19
PU004.006.100T	6	4	30 mm	40	13	100 m	19
PU055.008.025T	8	5,50	45 mm	37	12	25 m	33
PU055.008.100T	8	5,50	45 mm	37	12	100 m	33
PU007.010.025T	10	7	35 mm	35	12	25 m	50
PU007.010.100T	10	7	35 mm	35	12	100 m	50
PU008.012.025T	12	8	30 mm	40	13	25 m	78
PU008.012.100T	12	8	30 mm	40	13	100 m	78

RED POLYURETHANE HOSE

TUBO POLIURETANO COLORE ROSSO
TUBO POLIURETANO COLOR ROJO
TUYAU POLYURÉTHANE COULEUR ROUGE
POLYURETHAN-SCHLAUCH ROT




Code	Ø e	Ø i	Bending radius	Pressures at 20°C			(g)
				Burst	Working		
PU002.004.025R	4	2	20 mm	67	22	25 m	12
PU002.004.100R	4	2	20 mm	67	22	100 m	12
PU004.006.025R	6	4	30 mm	40	13	25 m	19
PU004.006.100R	6	4	30 mm	40	13	100 m	19
PU055.008.025R	8	5,50	45 mm	37	12	25 m	33
PU055.008.100R	8	5,50	45 mm	37	12	100 m	33
PU007.010.025R	10	7	35 mm	35	12	25 m	50
PU007.010.100R	10	7	35 mm	35	12	100 m	50
PU008.012.025R	12	8	30 mm	40	13	25 m	78
PU008.012.100R	12	8	30 mm	40	13	100 m	78

YELLOW POLYURETHANE HOSE

TUBO POLIURETANO COLORE GIALLO
TUBO POLIURETANO COLOR AMARILLO
TUYAU POLYURÉTHANE COULEUR JAUNE
POLYURETHAN-SCHLAUCH GELB



Code	Ø e	Ø i	Bending radius	Pressures at 20°C			(g)
				Burst	Working		
PU002.004.025G	4	2	20 mm	67	22	25 m	12
PU002.004.100G	4	2	20 mm	67	22	100 m	12
PU004.006.025G	6	4	30 mm	40	13	25 m	19
PU004.006.100G	6	4	30 mm	40	13	100 m	19
PU055.008.025G	8	5,50	45 mm	37	12	25 m	33
PU055.008.100G	8	5,50	45 mm	37	12	100 m	33
PU007.010.025G	10	7	35 mm	35	12	25 m	50
PU007.010.100G	10	7	35 mm	35	12	100 m	50
PU008.012.025G	12	8	30 mm	40	13	25 m	78
PU008.012.100G	12	8	30 mm	40	13	100 m	78

POLYAMIDE HOSES

Technical data: chemically produced polyamide 12 hose, light resistant and plastic coated.

Applications: especially suited for industrial automation.

Operating temperature: -40°C / +80°C

Supply: 25 m boxed coils / 100 m drums.

TUBI IN POLIAMMIDE

Caratteristiche tecniche: tubo in poliammide 12 flessibile di origine chimica, stabilizzata alla luce e plastificata.

Applicazioni: tubi particolarmente adatti all'automazione in campo industriale.

Temperatura di utilizzo: -40°C / +80°C

Fornitura: rotoli da 25 m in scatola / bobine da 100 m su rocchetto

TUBOS DE POLIAMIDA

Características técnicas: tubo de poliamida 12 flexible de origen químico, estabilizada a la luz y plastificada.

Aplicaciones: tubos especialmente adecuados para la automatización en el sector industrial.

Temperatura de uso: -40°C / +80°C

Suministro: rollos de 25 m en caja / bobinas de 100 m en carrete.

TUYAUX EN POLYAMIDE

Caractéristiques techniques: tuyau en polyamide 12 flexible d'origine chimique stabilisé à la lumière et plastifié.

Applications: tuyaux particulièrement adaptés à l'automatisation industrielle.

Température d'utilisation: -40°C / +80°C

Fourniture: rouleaux de 25 m en boîte / touret de 100 m.

SCHLÄUCHE AUS POLYAMID

Technische Eigenschaften: Schlauch aus flexiblem Polyamid 12 chemischen Ursprungs, lichtstabilisiert und plastifiziert.

Anwendungsbereiche: besonders für die Automation im Industriebereich geeignet.

Temperaturbereich: -40°C / +80°C

Lieferung: 25 m Rollen der Schachtel / 100 m Rollen.

TRANSPARENT POLYAMIDE HOSE

TUBO IN POLIAMMIDE COLORE TRASPARENTE
TUBO DE POLIAMIDA DE COLOR TRANSPARENTE
TUYAU EN POLYAMIDE COULEUR TRANSPARENTE
POLYAMIDSCHLAUCH TRANSPARENT



Code	Ø e	Ø i	Bending radius	Pressures at 20°C		Box icon	(g)
				Burst	Working		
PA027.004.025T	4	2,70	25 mm	78	26	25 m	7
PA027.004.100T	4	2,70	25 mm	78	26	100 m	7
PA004.006.025T	6	4	30 mm	80	27	25 m	16
PA004.006.100T	6	4	30 mm	80	27	100 m	16
PA006.008.025T	8	6	40 mm	57	19	25 m	22
PA006.008.100T	8	6	40 mm	57	19	100 m	22
PA008.010.025T	10	8	60 mm	44	15	25 m	29
PA008.010.100T	10	8	60 mm	44	15	100 m	29
PA010.012.025T	12	10	85 mm	36	12	25 m	35
PA010.012.100T	12	10	85 mm	36	12	100 m	35
PA012.014.025T	14	12	85 mm	48	16	25 m	59
PA012.014.100T	14	12	85 mm	48	16	100 m	59
PA012.016.025T	16	12	95 mm	57	19	25 m	90
PA012.016.100T	16	12	95 mm	57	19	100 m	90

BLACK POLYAMIDE HOSE

TUBO IN POLIAMMIDE COLORE NERO
TUBO DE POLIAMIDA DE COLOR NEGRO
TUYAU EN POLYAMIDE COULEUR NOIR
POLYAMIDSCHLAUCH SCHWARZ



Code	Ø e	Ø i	Bending radius	Pressures at 20°C		Box icon	(g)
				Burst	Working		
PA027.004.025N	4	2,70	25 mm	78	26	25 m	7
PA027.004.100N	4	2,70	25 mm	78	26	100 m	7
PA004.006.025N	6	4	30 mm	80	27	25 m	16
PA004.006.100N	6	4	30 mm	80	27	100 m	16
PA006.008.025N	8	6	40 mm	57	19	25 m	22
PA006.008.100N	8	6	40 mm	57	19	100 m	22
PA008.010.025N	10	8	60 mm	44	15	25 m	29
PA008.010.100N	10	8	60 mm	44	15	100 m	29
PA010.012.025N	12	10	85 mm	36	12	25 m	35
PA010.012.100N	12	10	85 mm	36	12	100 m	35
PA012.014.025N	14	12	85 mm	48	16	25 m	59
PA012.014.100N	14	12	85 mm	48	16	100 m	59
PA012.016.025N	16	12	95 mm	57	19	25 m	90
PA012.016.100N	16	12	95 mm	57	19	100 m	90

GREEN POLYAMIDE HOSE

TUBO IN POLIAMMIDE COLORE VERDE
TUBO DE POLIAMIDA DE COLOR VERDE
TUYAU EN POLYAMIDE COULEUR VERT
POLYAMIDSCHLAUCH GRÜN



Code	Ø e	Ø i	Bending radius	Pressures at 20°C		Box icon	(g)
				Burst	Working		
PA027.004.025V	4	2,70	25 mm	78	26	25 m	7
PA027.004.100V	4	2,70	25 mm	78	26	100 m	7
PA004.006.025V	6	4	30 mm	80	27	25 m	16
PA004.006.100V	6	4	30 mm	80	27	100 m	16
PA006.008.025V	8	6	40 mm	57	19	25 m	22
PA006.008.100V	8	6	40 mm	57	19	100 m	22
PA008.010.025V	10	8	60 mm	44	15	25 m	29
PA008.010.100V	10	8	60 mm	44	15	100 m	29
PA010.012.025V	12	10	85 mm	36	12	25 m	35
PA010.012.100V	12	10	85 mm	36	12	100 m	35
PA012.014.025V	14	12	85 mm	48	16	25 m	59
PA012.014.100V	14	12	85 mm	48	16	100 m	59
PA012.016.025V	16	12	95 mm	57	19	25 m	90
PA012.016.100V	16	12	95 mm	57	19	100 m	90

BLUE POLYAMIDE HOSE

TUBO IN POLIAMMIDE COLORE BLU
TUBO DE POLIAMIDA DE COLOR AZUL
TUYAU EN POLYAMIDE COULEUR BLEU
POLYAMIDSCHLAUCH BLAU



Code	Ø e	Ø i	Bending radius	Pressures at 20°C		Icon	(g)
				Burst	Working		
PA027.004.025B	4	2,70	25 mm	78	26	25 m	7
PA027.004.100B	4	2,70	25 mm	78	26	100 m	7
PA004.006.025B	6	4	30 mm	80	27	25 m	16
PA004.006.100B	6	4	30 mm	80	27	100 m	16
PA006.008.025B	8	6	40 mm	57	19	25 m	22
PA006.008.100B	8	6	40 mm	57	19	100 m	22
PA008.010.025B	10	8	60 mm	44	15	25 m	29
PA008.010.100B	10	8	60 mm	44	15	100 m	29
PA010.012.025B	12	10	85 mm	36	12	25 m	35
PA010.012.100B	12	10	85 mm	36	12	100 m	35
PA012.014.025B	14	12	85 mm	48	16	25 m	59
PA012.014.100B	14	12	85 mm	48	16	100 m	59
PA012.016.025B	16	12	95 mm	57	19	25 m	90
PA012.016.100B	16	12	95 mm	57	19	100 m	90

RED POLYAMIDE HOSE

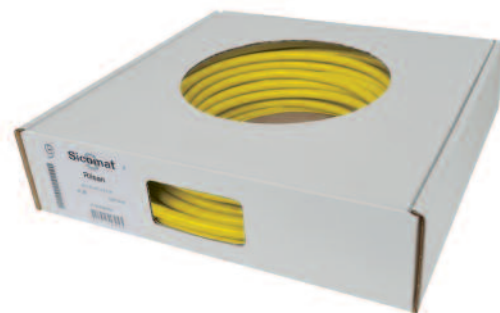
TUBO IN POLIAMMIDE COLORE ROSSO
TUBO DE POLIAMIDA DE COLOR ROJO
TUYAU EN POLYAMIDE COULEUR ROUGE
POLYAMIDSCHLAUCH ROT



Code	Ø e	Ø i	Bending radius	Pressures at 20°C		Icon	(g)
				Burst	Working		
PA027.004.025R	4	2,70	25 mm	78	26	25 m	7
PA027.004.100R	4	2,70	25 mm	78	26	100 m	7
PA004.006.025R	6	4	30 mm	80	27	25 m	16
PA004.006.100R	6	4	30 mm	80	27	100 m	16
PA006.008.025R	8	6	40 mm	57	19	25 m	22
PA006.008.100R	8	6	40 mm	57	19	100 m	22
PA008.010.025R	10	8	60 mm	44	15	25 m	29
PA008.010.100R	10	8	60 mm	44	15	100 m	29
PA010.012.025R	12	10	85 mm	36	12	25 m	35
PA010.012.100R	12	10	85 mm	36	12	100 m	35
PA012.014.025R	14	12	85 mm	48	16	25 m	59
PA012.014.100R	14	12	85 mm	48	16	100 m	59
PA012.016.025R	16	12	95 mm	57	19	25 m	90
PA012.016.100R	16	12	95 mm	57	19	100 m	90

YELLOW POLYAMIDE HOSE

TUBO IN POLIAMMIDE COLORE GIALLO
TUBO DE POLIAMIDA DE COLOR AMARILLO
TUYAU EN POLYAMIDE COULEUR JAUNE
POLYAMIDSCHLAUCH GELB



Code	Ø e	Ø i	Bending radius	Pressures at 20°C		Icon	(g)
				Burst	Working		
PA027.004.025G	4	2,70	25 mm	78	26	25 m	7
PA027.004.100G	4	2,70	25 mm	78	26	100 m	7
PA004.006.025G	6	4	30 mm	80	27	25 m	16
PA004.006.100G	6	4	30 mm	80	27	100 m	16
PA006.008.025G	8	6	40 mm	57	19	25 m	22
PA006.008.100G	8	6	40 mm	57	19	100 m	22
PA008.010.025G	10	8	60 mm	44	15	25 m	29
PA008.010.100G	10	8	60 mm	44	15	100 m	29
PA010.012.025G	12	10	85 mm	36	12	25 m	35
PA010.012.100G	12	10	85 mm	36	12	100 m	35
PA012.014.025G	14	12	85 mm	48	16	25 m	59
PA012.014.100G	14	12	85 mm	48	16	100 m	59
PA012.016.025G	16	12	95 mm	57	19	25 m	90
PA012.016.100G	16	12	95 mm	57	19	100 m	90

SNS HOSES

Technical data: inner hose in extra flexible PVC, reinforced blue polyester and PVC extra flexible outer covering.

Applications: suitable for pneumatic tools and hoses reels.

Operating temperature: -20°C / +60°C

Supply: coil.

TUBI SNS

Caratteristiche tecniche: tubo interno in PVC extra flessibile, rinforzo in poliester e rivestimento esterno in PVC extra flessibile blu.

Applicazioni: alimentazione utensili pneumatici e equipaggiamento di avvolgitubo.

Temperatura di utilizzo: -20°C / +60°C

Fornitura: in bobina.

TUBOS SNS

Características técnicas: tubo interno de PVC extra flexible, refuerzo de poliéster y revestimiento externo de PVC extra flexible azul.

Aplicaciones: alimentación de herramientas neumáticas y equipamiento de enrolladores para tubos flexibles.

Temperatura de uso: -20°C / +60°C

Suministro: en bobina.

TUYAUX SNS

Caractéristiques techniques: tuyau interne en PVC extra-flexible, renfort en polyester et revêtement externe en PVC extra-flexible bleu.

Applications: alimentation des outils pneumatiques et équipement enrouleurs tuyaux.

Température d'utilisation: -20°C / +60°C

Fourniture: en bobine.

SNS-SCHLÄUCHE

Technische Eigenschaften: Innenteil aus besonders biegsamem PVC, polyesterverstärkt und Außenmantel aus besonders biegsamem blauen PVC.

Anwendungsbereiche: Versorgung von pneumatischen Werkzeugen und als Schlauchaufrollerausrüstung.

Temperaturbereich: -20°C / +60°C

Lieferung: Rollen.

SNS HOSE

TUBO SNS
SNS HOSE
TUYAU SNS
SNS SCHLAUCH



Code	Ø e	Ø i	Bending radius	Pressures at 20°C		Burst	Working	Box	(g)
				Burst	Working				
SNS006.011.025B	11	6,30	45 mm	60	15	25 m	81		
SNS006.011.050B	11	6,30	45 mm	60	15	50 m	81		
SNS008.013.025B	13	8	56 mm	60	15	25 m	106		
SNS008.013.050B	13	8	56 mm	60	15	50 m	106		
SNS009.014.050B	14	9,5	63 mm	60	15	50 m	131		
SNS010.015.025B	15,50	10	70 mm	60	15	25 m	141		
SNS010.015.050B	15,50	10	70 mm	60	15	50 m	141		
SNS012.019.025B	19	12,70	89 mm	60	15	25 m	200		
SNS012.019.050B	19	12,70	89 mm	60	15	50 m	200		

NAS HOSES

Technical data: inner hose in antistatic PVC, middle coating in transparent PVC, textile reinforcement and PVC outer coating extremely resistant to oils, greases and hydrocarbons.

Applications: suitable for pneumatic tools employed in hazardous environments (also according to ATEX).

Operating temperature: -20°C / +90°C.

Supply: coil.

TUBI NAS

Caratteristiche tecniche: tubo interno in PVC antistatico, camicia intermedia in PVC trasparente, rinforzo tessile e rivestimento esterno in PVC resistente agli oli, grassi e agli idrocarburi.

Applicazioni: alimentazione di utensili pneumatici in ambienti a rischio (anche soggetti alla direttiva ATEX).

Temperatura di utilizzo: -20°C / +90°C.

Fornitura: in bobina.

TUBOS NAS

Características técnicas: tubo interno de PVC antiestático, camisa intermedia de PVC transparente, refuerzo textil y revestimiento externo de PVC resistente a aceites, grasas y a hidrocarburos.

Aplicaciones: alimentación de herramientas neumáticas en ambientes de riesgo (también sujetos a la directiva ATEX).

Temperatura de uso: -20°C / +90°C

Suministro: en bobina.

TUYAUX NAS

Caractéristiques techniques: tuyau interne en PVC antistatique, chemise intermédiaire en PVC transparent, renfort textile et revêtement externe en PVC résistant à l'huile, à la graisse et aux hydrocarbures.

Applications: alimentation des outils pneumatiques dans les environnements à risque (également soumis à directive ATEX).

Température d'utilisation: -20°C / +90°C

Fourniture: en bobine.

NAS-SCHLÄUCHE

Technische Eigenschaften: Innenteil aus antistatischem PVC, Zwischenmantel aus transparentem PVC, gewebeverstärkt und Außenmantel aus gegen Öle, Fette und Kohlenwasserstoffe beständigem PVC.

Anwendungsbereiche: Versorgung von pneumatischen Werkzeugen in gefährlicher Umgebung (auch Umgebungen, die der ATEX-Richtlinie unterliegen).


Temperaturbereich: -20°C / +90°C

Lieferung: Rollen.

NAS HOSE

TUBO NAS
TUBO NAS
TUYAU NAS
NAS-SCHLAUCH



Code	Ø e	Ø i	Bending radius	Pressures at 20°C		Burst	Working		(g)
				Burst	Working				
NAS008.015.025B	15	8	48 mm	64	16	25 m	168		
NAS008.015.050B	15	8	48 mm	64	16	50 m	168		
NAS009.016.025B	16	9	54 mm	64	16	25 m	183		
NAS009.016.050B	16	9	54 mm	64	16	50 m	183		
NAS010.017.025B	17,50	10	60 mm	64	16	25 m	216		
NAS010.017.050B	17,50	10	60 mm	64	16	50 m	216		

TCF HOSES

Technical data: inner hose in flexible PVC, polyester reinforcement and flexible PVC outer coating.

Applications: air and water supply. Also suitable for the transport of fruit juices and in the food industry.

Operating temperature: -15°C / +60°C.

Supply: coil.

TUBI TCF

Caratteristiche tecniche: tubo interno in PVC flessibile, rinforzo in poliestere e rivestimento esterno in PVC flessibile.

Applicazioni: adatto per l'alimentazione pneumatica, per acqua, per il trasporto di succhi di frutta e in campo alimentare.

Temperatura di utilizzo: -15°C / +60°C.

Fornitura: in bobina.

TUBOS TCF

Características técnicas: tubo interno de PVC extra flexible, refuerzo de poliéster y revestimiento externo de PVC flexible.

Aplicaciones: adecuado para alimentación neumática, para agua, para el transporte de zumos de fruta y en el sector alimentario.

Temperatura de uso: -15°C / +60°C

Suministro: en bobina.

TUYAUX TCF

Caractéristiques techniques: tuyau interne en PVC flexible, renfort en polyester et revêtement externe en PVC flexible.

Applications: prévu pour l'alimentation pneumatique, l'eau, le transport de jus de fruits et le secteur alimentaire.

Température d'utilisation: -15°C / +60°C

Fourniture: en bobine.

TCF-SCHLÄUCHE

Technische Eigenschaften: Innenteil aus biegsamem PVC, polyesterverstärkt und Außenmantel aus biegsamem PVC.

Anwendungsbereiche: für die pneumatische Versorgung, für Wasser, für die Beförderung von Fruchtsäften und im Nahrungsmittelbereich.

Temperaturbereich: -15°C / +60°C

Lieferung: Rollen.

BLUE TCF HOSE

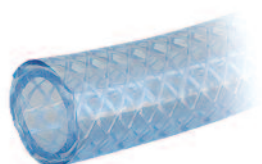
TUBO TCF BLU
TUBO TCF AZUL
TUYAU TCF BLEU
TCF-SCHLAUCH BLAU



Code	Ø e	Ø i	Bending radius	Pressures at 20°C		Burst	Working	Box	(g)
				Burst	Working				
TCF008.013.025B	13	8	65 mm	40	13	25 m	100		
TCF010.015.025B	15	10	80 mm	40	13	25 m	120		
TCF012.018.025B	18	12,50	110 mm	40	13	25 m	160		

TRANSPARENT TCF HOSE

TUBO TCF TRASPARENTE
TUBO TCF TRANSPARENTE
TUYAU TCF TRANSPARENT
TCF-SCHLAUCH TRANSPARENT



Code	Ø e	Ø i	Bending radius	Pressures at 20°C		Burst	Working	Box	(g)
				Burst	Working				
TCF008.013.025T	13	8	65 mm	40	13	25 m	100		
TCF010.015.025T	15	10	80 mm	40	13	25 m	120		
TCF012.018.025T	18	12,50	110 mm	40	13	25 m	160		
TCF016.022.025T	22	16	145 mm	40	13	25 m	217		
TCF019.026.025T	26	19	174 mm	40	13	25 m	300		
TCF025.033.025T	33	25	260 mm	40	13	25 m	444		

PUA HOSES

Technical data: inner hose made with ether based polyurethane reinforced with braided polyester fibers and an outer protective covering in blue polyurethane.

Applications: suitable for pneumatic tools in the industrial, agricultural and automotive sectors.

Operating temperature: -40°C / +60°C

Supply: coil.

TUBI PUA

Caratteristiche tecniche: tubo interno in poliuretano base etere rinforzo con treccia in fibra di poliestere e rivestimento esterno in poliuretano blu.

Applicazioni: tubo adatto all'alimentazione di utensili pneumatici in campo industriale, delle autofficine e agricolo.

Temperatura di utilizzo: -40°C / +60°C

Fornitura: in bobina.

TUBOS PUA

Características técnicas: tubo interno de poliuretano a base de éter refuerzo con trenza de fibra de poliéster y revestimiento externo de poliuretano azul.

Aplicaciones: tubo adecuado para alimentación de herramientas neumáticas en el sector industrial, de los talleres de coches y agrícola.

Temperatura de uso: -40°C / +60°C

Suministro: en bobina.

TUYAUX PUA

Caractéristiques techniques: tuyau interne en polyuréthane à base d'éther renforcé par tresse en fibre de polyester et revêtement externe en polyuréthane bleu.

Applications: tuyau prévu pour l'alimentation des outils pneumatiques dans le secteur industriel, des garages et de l'agriculture.

Température d'utilisation: -40°C / +60°C

Fourniture: en bobine.

PUA-SCHLÄUCHE

Technische Eigenschaften: Innenteil aus Polyurethan auf Ätherbasis polyesterfaserverstärkt und Außenmantel aus blauem Polyurethan.

Anwendungsbereiche: für die Versorgung von pneumatischen Werkzeugen im Industriebereich, Autowerkstätten und in der Landwirtschaft.


Temperaturbereich: -40°C / +60°C

Lieferung: Rollen.

PUA HOSE

TUBO PUA
TUBO PUA
TUYAU PUA
PUA-SCHLAUCH



Code	Ø e	Ø i	Bending radius	Pressures at 20°C			(g)
				Burst	Working		
PUA008.012.025B	12	8	65 mm	60	20	25 m	90
PUA008.012.100B	12	8	65 mm	60	20	100 m	90
PUA010.014.025B	14,50	10	80 mm	45	15	25 m	168
PUA010.014.100B	14,50	10	80 mm	45	15	100 m	168

SPIRALS



TECHNICAL DATA

Material: polyurethane blue shore 98A±2

Working pressure: PN 13 bar

Temperature range: -20°C ÷ +70°C

DATI TECNICI

Materiale: poliuretano colore blu 98A±2 shore

Pressione di lavoro: PN 13 bar

Campo di temperatura: -20°C ÷ +70°C

DATOS TÉCNICOS

Material: poliuretano de color azul 98A±2 shore

Presión de trabajo: PN 13 bar

Campo di temperatura: -20°C ÷ +70°C

DONNÉES TECHNIQUES

Matériau: polyuréthane couleur bleu 98A±2 shore

Pression de service: PN 13 bars

Plage de température: -20°C ÷ +70°C

TECHNISCHE DATEN

Material: Polyurethan blau 98A±2 shore

Arbeitsdruck: PN 13 bar

Temperaturbereich: -20°C ÷ +70°C



POLYURETHANE SPIRALS

Technical data: Spirals made with blue polyurethane hose 98A +/-2 shore and fitted with couplings at both ends.

Operating temperature: -20°C / +70°C

SPIRALI IN POLIURETANO

Caratteristiche tecniche: Spirali realizzate con tubo in poliuretano blu 98A +/- 2 shore e dotate di raccordi alle estremità.

Temperatura di utilizzo: -20°C / +70°C

ESPIRALES DE POLIURETANO

Características técnicas: Espirales realizadas con tubo de poliuretano azul 98A +/-2 shore y dotadas de racores en los extremos.

Temperatura de uso: -20°C / +70°C

SPIRALES EN POLYURÉTHANE

Caractéristiques techniques: Spirales réalisées avec tuyau en polyuréthane bleu 98A +/-2 shore et équipées de raccords aux extrémités.

Température d'utilisation: -20°C / +70°C

SPIRALEN AUS POLYURETHAN

Technische Eigenschaften: Mit Schlauch aus blauem Polyurethan 98A +/-2 shore hergestellte Spiralen, mit Kupplungen an den Enden.

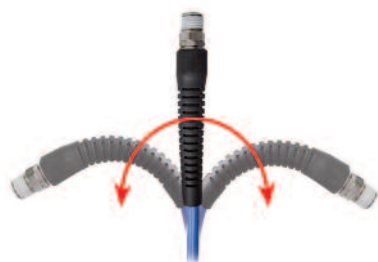
Temperaturbereich: -20°C / +70°C

POLYURETHANE SPIRAL

SPIRALE IN POLIURETANO
ESPIRAL DE POLIURETANO
SPIRALE EN POLYURÉTHANE
SPIRALE AUS POLYURETHAN



Code	Ø e	Ø i	Ø fittings	Spirals lenght				(g)
				Linear hose	Out of work	Stretched	Loops Ø	
SB005.008.003	8	5	1/4"-1/4"	3 m	0,17m	2,50 m	42	185
SB005.008.005	8	5	1/4"-1/4"	5 m	0,27m	4,20 m	42	263
SB005.008.008	8	5	1/4"-1/4"	8 m	0,46m	6,80 m	42	374
SB005.008.012	8	5	1/4"-1/4"	12 m	0,63m	10,20 m	46	520
SB065.010.005	10	6,5	1/4"-1/4"	5 m	0,27m	4,20 m	65	380
SB065.010.006	10	6,5	1/4"-1/4"	6 m	0,32m	5,10 m	65	440
SB065.010.008	10	6,5	1/4"-1/4"	8 m	0,48m	6,80 m	65	560
SB065.010.012	10	6,5	1/4"-1/4"	12 m	0,68m	10,20 m	65	780
SB008.012.005	12	8	3/8"-3/8"	5 m	0,28m	4,20 m	80	530
SB008.012.008	12	8	3/8"-3/8"	8 m	0,50m	6,80 m	80	750
SB008.012.012	12	8	3/8"-3/8"	12 m	0,70m	10,20 m	80	1050



1/4" + Teflon



1/4" + Teflon

POLYAMIDE SPIRALS

Technical data: spirals made with flexible plant-based polyamide 11 tubing.

Operating temperature: -40°C / +80°C

SPIRALI IN POLIAMMIDE

Caratteristiche tecniche: spirali realizzate con tubo in poliammide 11 flessibile di origine vegetale.

Temperatura di utilizzo: -40°C / +80°C

ESPIRALES DE POLIAMIDA

Características técnicas: espirales realizados con tubo de poliamida 11 flexible de origen vegetal.

Temperatura de uso: -40°C / +80°C

SPIRALES EN POLYAMIDE

Caractéristiques techniques: spirales réalisées avec tuyau en polyamide 11 flexible d'origine végétale.

Température d'utilisation: -40°C / +80°C

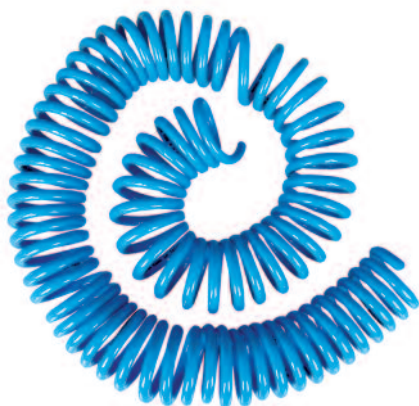
SPIRALEN AUS POLYAMID

Technische Eigenschaften: Mit Schlauch aus Polyamid 11 pflanzlichen Ursprungs hergestellte Spiralen.

Temperaturbereich: -40°C / +80°C

POLYAMIDE SPIRAL

SPIRALE IN POLIAMMIDE
ESPIRAL DE POLIAMIDA
SPIRALE EN POLYAMIDE
SPIRALE AUS POLYAMID



Code	Ø e	Ø i	Spirals lenght			Loops Ø	(g)
			Linear hose	Out of work	Stretched		
SP004.006.030B	6	4	30 m	0,95 m	20 m	67	480
SP006.008.030B	8	6	30 m	1 m	20 m	86	690
SP008.010.030B	10	8	30 m	1 m	20 m	110	870
SP010.012.030B	12	10	30 m	1 m	20 m	134	1050



CODE INDEX

CODE	DESCRIPTION	PAG.
SNS008.013.025B	SNS HOSE - TUBO SNS - TUBO SNS - TUYAU SNS - SNS-SCHLAUCH	9
SNS008.013.050B	SNS HOSE - TUBO SNS - TUBO SNS - TUYAU SNS - SNS-SCHLAUCH	9
SNS009.014.050B	SNS HOSE - TUBO SNS - TUBO SNS - TUYAU SNS - SNS-SCHLAUCH	9
SNS010.015.025B	SNS HOSE - TUBO SNS - TUBO SNS - TUYAU SNS - SNS-SCHLAUCH	9
SNS010.015.050B	SNS HOSE - TUBO SNS - TUBO SNS - TUYAU SNS - SNS-SCHLAUCH	9
SNS012.019.025B	SNS HOSE - TUBO SNS - TUBO SNS - TUYAU SNS - SNS-SCHLAUCH	9
SNS012.019.050B	SNS HOSE - TUBO SNS - TUBO SNS - TUYAU SNS - SNS-SCHLAUCH	9
SP004.006.030B	POLYAMIDE SPIRAL - SPIRALE IN POLIAMMIDE - ESPIRAL DE POLIAMIDA - SPIRALE EN POLYAMIDE - SPIRALE AUS POLYAMID	15
SP006.008.030B	POLYAMIDE SPIRAL - SPIRALE IN POLIAMMIDE - ESPIRAL DE POLIAMIDA - SPIRALE EN POLYAMIDE - SPIRALE AUS POLYAMID	15
SP008.010.030B	POLYAMIDE SPIRAL - SPIRALE IN POLIAMMIDE - ESPIRAL DE POLIAMIDA - SPIRALE EN POLYAMIDE - SPIRALE AUS POLYAMID	15
SP010.012.030B	POLYAMIDE SPIRAL - SPIRALE IN POLIAMMIDE - ESPIRAL DE POLIAMIDA - SPIRALE EN POLYAMIDE - SPIRALE AUS POLYAMID	15
TCF008.013.025B	BLUE TCF HOSE - TUBO TFC BLU - TUBO TFC AZUL - TUYAU TFC BLEU - TFC-SCHLAUCH BLAU	11
TCF008.013.025T	TRASPARENT TCF HOSE - TUBO TFC TRASPARENTE - TUBO TFC TRASPARENTE - TUYAU TFC TRASPARENT - TFC-SCHLAUCH TRASPARENT	11
TCF010.015.025B	BLUE TCF HOSE - TUBO TFC BLU - TUBO TFC AZUL - TUYAU TFC BLEU - TFC-SCHLAUCH BLAU	11
TCF010.015.025T	TRASPARENT TCF HOSE - TUBO TFC TRASPARENTE - TUBO TFC TRASPARENTE - TUYAU TFC TRASPARENT - TFC-SCHLAUCH TRASPARENT	11
TCF012.018.025B	BLUE TCF HOSE - TUBO TFC BLU - TUBO TFC AZUL - TUYAU TFC BLEU - TFC-SCHLAUCH BLAU	11
TCF012.018.025T	TRASPARENT TCF HOSE - TUBO TFC TRASPARENTE - TUBO TFC TRASPARENTE - TUYAU TFC TRASPARENT - TFC-SCHLAUCH TRASPARENT	11
TCF016.022.025T	TRASPARENT TCF HOSE - TUBO TFC TRASPARENTE - TUBO TFC TRASPARENTE - TUYAU TFC TRASPARENT - TFC-SCHLAUCH TRASPARENT	11
TCF019.026.025T	TRASPARENT TCF HOSE - TUBO TFC TRASPARENTE - TUBO TFC TRASPARENTE - TUYAU TFC TRASPARENT - TFC-SCHLAUCH TRASPARENT	11
TCF025.033.025T	TRASPARENT TCF HOSE - TUBO TFC TRASPARENTE - TUBO TFC TRASPARENTE - TUYAU TFC TRASPARENT - TFC-SCHLAUCH TRASPARENT	11

Progetto grafico e impaginazione Movida srl, Mondovì Cn

Finito di stampare nel mese di Settembre 2016
presso Arti Grafiche DIAL, Mondovì CN